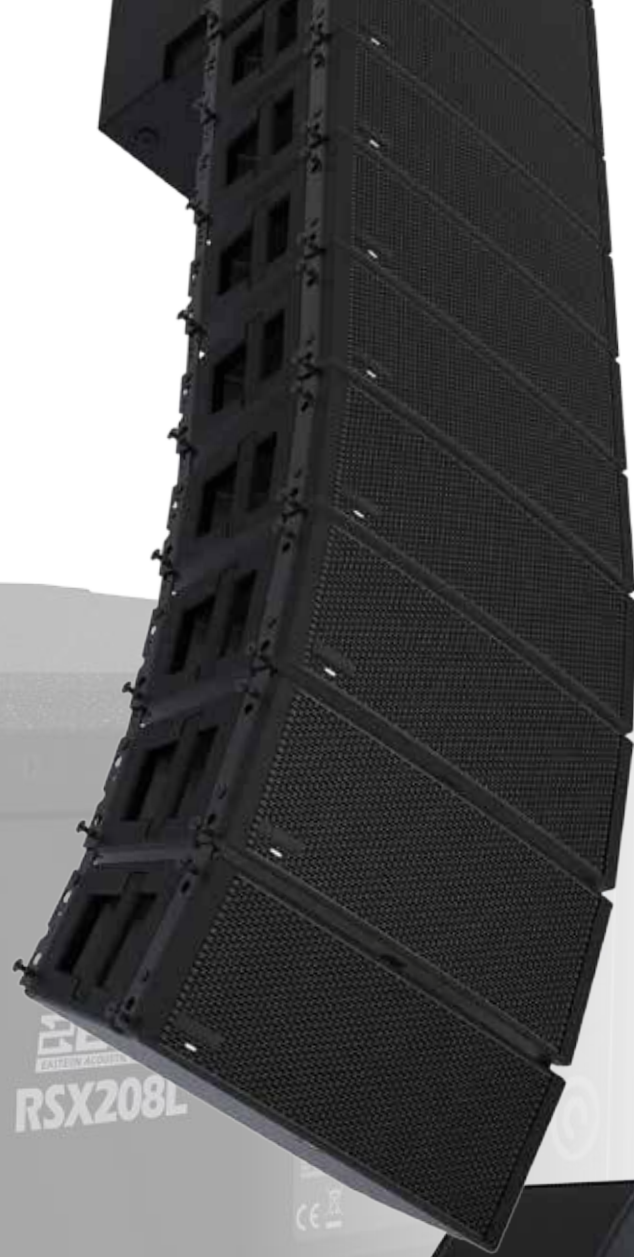


# BEAW RADIUS™



BEAW  
RADIUS™  
RSX208L





# RADIUS™

RADIUS is ideal for:

- House of Worship
- Theatres, Auditoria and Performing Arts Centers
- Live Music Clubs
- Corporate AV Houses
- Live Production/Regional Rental Houses
- Dry Hire



## Simply sophisticated

Designed to streamline setup and deliver maximum results in minimum time, RADIUS couples unique and intelligent features with EAW's signature acoustical design to deliver solutions for rental firms and system integrators. With RADIUS, achieving optimal sonic performance has never been easier or more accessible. Smart features like OptiLogic™ drastically cut down on setup and tuning time. And, system design and control has never been more approachable. The new EAWmosaic™ app provides total system optimization from anywhere in the venue, plus intuitive room design and prediction in a single, comprehensive application. With the proven sonic performance of EAW's acoustic design and DSP mastery, plus full Dante™ integration across the line, RADIUS delivers an intelligent and flexible system to fit any budget.

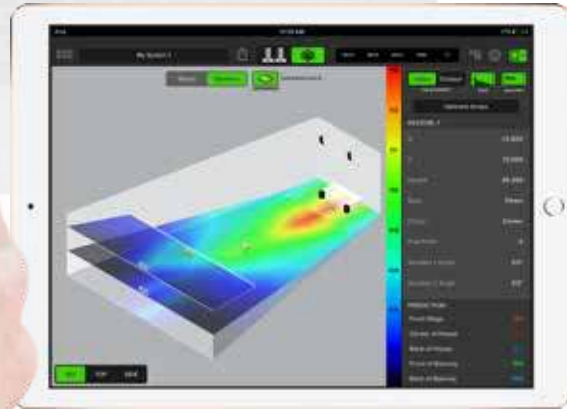


## Total system optimization

With an extremely approachable design for engineers and system techs of all levels, EAWmosaic™ offers powerful design, prediction and system optimization. This single, comprehensive app solution delivers intuitive and powerful control over your RADIUS system.



**Rig View** Discovery, grouping, and configuration of all networked loudspeakers



**Venue View** Venue design, prediction, and system optimization online or offline

EAWmosaic provides simple PDF export of system design with critical system properties

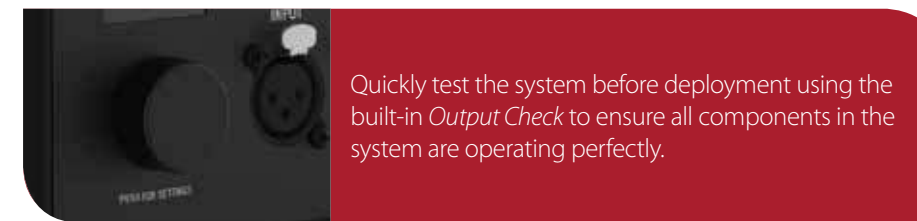
## Innovations that matter

Innovating for the sake of innovating can be less than inspiring. Technology should drive solutions and make things easier. RADIUS harnesses powerful technology to make it easier and faster to achieve great sounding results. After all, time is money.

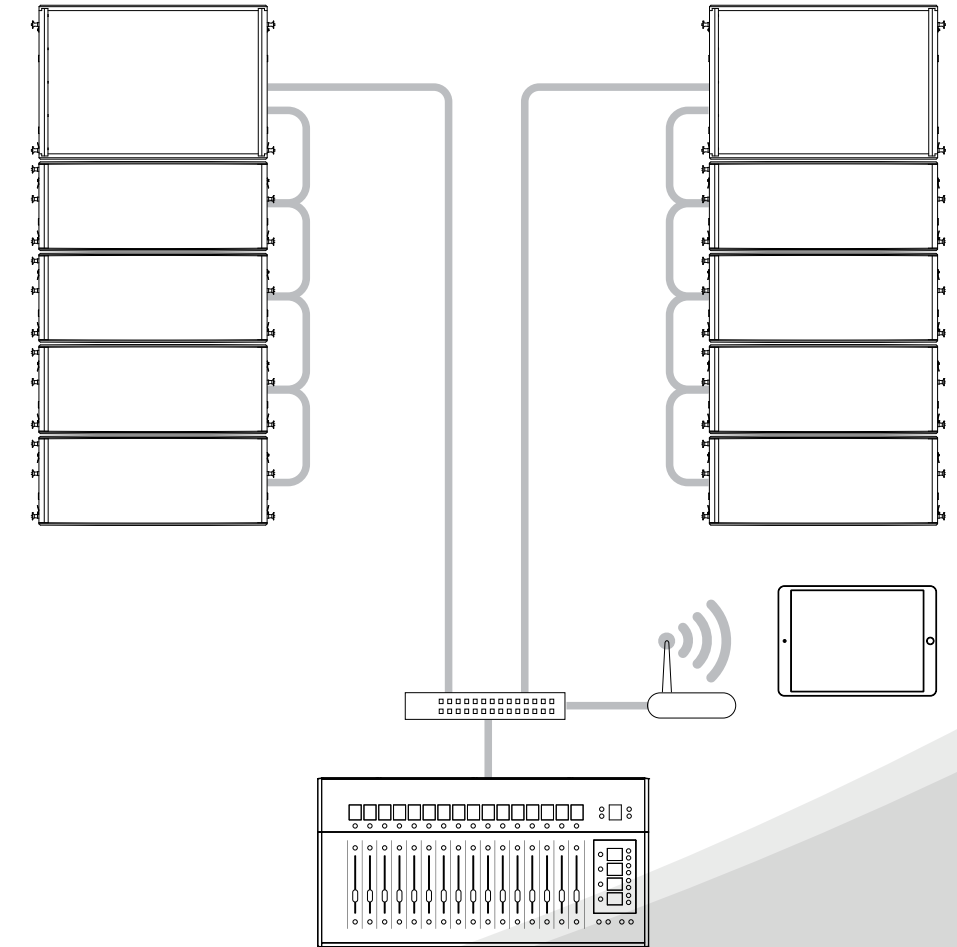
## Near-instant optimization

The RADIUS array features OptiLogic. Through a clever combination of integrated infrared transceivers and tilt sensors, each module knows its exact position and splay angle within the array. This provides instant group and acoustical output optimization.

- Compensates for array size, audience geometry, and throw distance
- Works both on and off network with full optimization via back panel as needed
- Further optimize with four pre-defined voicings to suit musical style and user taste



Quickly test the system before deployment using the built-in *Output Check* to ensure all components in the system are operating perfectly.

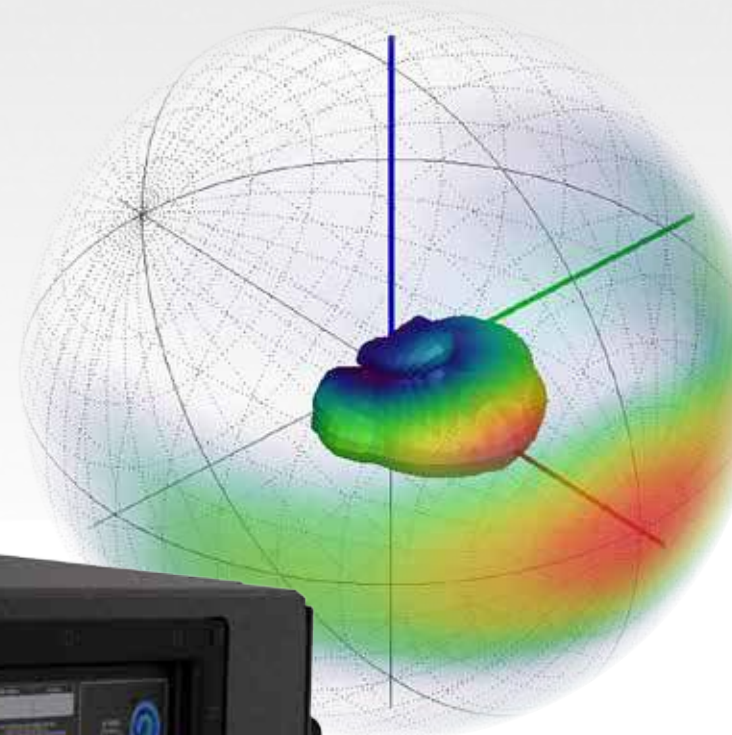


RADIUS features audio and communication along a single cable. Rack a switch on the ground and run a clean and simple Ethernet cable to the system.





- 1 Dual custom-designed 8" neodymium LF transducers
- 2 Dual 1.4" voice coil compression drivers
- 3 Integrated rigging hardware with simple latch and pin design for safe and simple deployment
- 4 Hybrid all-wood enclosure with robust, protective EAW RoadCoat™ treatment
- 5 Large, highly-legible navigation screen provides on-box access to all RADIUS functions including OptiLogic™ array optimization
- 6 Simple "turn and push" encoder provides easy access to parameter controls
- 7 Dual locking etherCON™ connectors provide simple daisy-chain Dante™ runs
- 8 Integrated WAP connection on each RADIUS loudspeaker provides flexible router placement options
- 9 XLR audio input and thru connections provide redundancy with on network or simple audio runs when off network
- 10 Inlet and loop connection points for powerCON™ runs



The dual stacked drivers combined with sophisticated horn design, produce the ideal vertical output lobe for use in multi-enclosure arrays, yielding optimal integration with minimal interactions.

### Precision at all costs

RADIUS benefits from EAW's long history of precision acoustical design, game-changing processing, and unwavering commitment to developing optimized components in each and every design. The result is spectacular fidelity at any level.

### The power of math

Harnessing powerful integral DSP to optimize audio quality before it even leaves the loudspeaker is a true EAW strength. RADIUS leverages proven algorithms that have redefined sonic performance.

- Focusing™ corrects inherent acoustical anomalies to deliver immaculate impulse response throughout the entire coverage pattern.
- DynO™ intelligently preserves a clean impulse response even at the highest output levels.

### Quality components

Every RADIUS loudspeaker employs compact Power Factor Corrected Class-D amplification providing 1000W or more of clean, efficient power. Custom, precision transducers developed specifically for RADIUS achieve the perfect balance of output, long-term reliability, fidelity, and weight.

**Dante™** With a Dante™ implementation that allows audio and communication along a single Ethernet cable, a RADIUS system reduces cabling cost and setup complexity. Plus, up to 10 devices can be daisy-chained without the need for a switch.



## A finish that fits

Bringing everything together in a package that meets both rigorous tour demands and aesthetically-demanding installs was a primary RADIUS design goal. With a unique cabinet construction, clean lines, and minimal branding, RADIUS is right at home in any application.

## Perfect balance

RADIUS enclosures bridge the gap between robust structural integrity and portability. Birch is used for structural support and acoustically-significant elements, while poplar is used elsewhere to reduce weight. Each enclosure is finished with our extremely durable, protective RoadCoat™.



FBX100 Flybar



SBX100 Standmount



Yoke Mounts



RSX18 Caster Pallet



RSXH Rain Guard



RSP-1 / RSP-2 Polemounts

## Accessories

A wide range of available accessories ensures application flexibility and tour-ready protection and transportability.

**RSP-1** Friction knob adjustable speaker-to-sub mounting pole (3.6-5.9 ft / 1085-1785 mm)

**RSP-2** Hand crank adjustable speaker-to-sub mounting pole (3.0-5.0 ft / 940-1505 mm)

**EyeBolt Kit** Eyebolt kit containing 4 M10 eyebolts of 38mm length and washers

**RSX8x Cover** Padded, nylon cover for the RSX86 / RSX89

**RSX12x Cover** Padded, nylon cover for the RSX126 / RSX129

**RSX12M Cover** Padded, nylon cover for the RSX12M

**RSX8x Yoke Mount** Variable angle U-bracket for RSX86 / RSX89

**RSX12x Yoke Mount** Variable angle U-bracket for RSX126 / RSX129

**RSXV Rain Guard** Vertically oriented rain guard RSX86 / RSX89/ RSX126 / RSX129

### Array Accessories

**FBX100** RSX208L/RSX12 Flybar

**SBX100** RSX208L stand mount adaptor (up to 2)

**RSXH Rain Guard** Horizontally oriented rain guard for RSX208L / RSX12/ RSX18

**Quad Array Case** ATA-rated case for up to four RSX802L modules and FBX100

### Subwoofer Accessories

**RSX12 Cover** Padded, nylon cover for the RSX12

**RSXH Rain Guard** Horizontally oriented rain guard RSX208L / RSX12/ RSX18 / RSX218

**RSX18 Cover** Padded, nylon cover for the RSX18

**RSX218 Cover** Padded, nylon cover for the RSX218

**RSX18 Caster Pallet** Transport and store up to three RSX18 subwoofers

**RSX218 Caster Pallet** Transport and store up to three RSX218 subwoofers





RSX208L

Operating Range (-10 dB, Hz)	65 Hz to 18 kHz
Calculated Maximum Output Peak (dB SPL)	131 dB
Nominal Coverage (degrees)	Horizontal 120°, Vertical 12°
Subsystems	LF: 1 x 8 in cone, 2 in voice coil, vented LF/MF: 1 x 8 in cone, 2 in voice coil, vented HF: 2 x 1 in exit, 1.4 in voice coil compression driver, horn-loaded
Amplifier Power	3x 500W
Weight (lb. / kg)	40.5 / 18.4
Dimensions (imperial / metric)	9.8x27x13 / 249x683x332



RSX126/RSX129

Operating Range (-10 dB, Hz)	48 Hz to 20 kHz
Calculated Maximum Output Peak (dB SPL)	136 dB
Nominal Coverage (degrees)	RSX126: Horizontal 60°, Vertical 45° RSX129: Horizontal 90°, Vertical 60°
Subsystems	LF: 1 x 12 in cone, 3 in voice coil, vented HF: 1 x 1 in exit, 1.7 in voice coil compression driver, horn-loaded
Amplifier Power	2x 500W
Weight (lb. / kg)	58.0 / 26.3
Dimensions (imperial / metric)	27x16.3x16.5 / 683x414x419



RSX86/RSX89

Operating Range (-10 dB, Hz)	68 Hz to 20 kHz
Calculated Maximum Output Peak (dB SPL)	125 dB
Nominal Coverage (degrees)	RSX86: Horizontal 60°, Vertical 45° RSX89 Horizontal 90°, Vertical 60°
Subsystems	LF: 1 x 8 in cone, 2 in voice coil, vented HF: 1 x 1 in exit, 1.4 in voice coil compression driver, horn-loaded
Amplifier Power	2x 500W
Weight (lb. / kg)	33.4 / 15.1
Dimensions (imperial / metric)	19.5x12.4x12.8 / 498x315x326



RSX12M

Operating Range (-10 dB, Hz)	50 Hz to 20 kHz
Calculated Maximum Output Peak (dB SPL)	130 dB
Nominal Coverage (degrees)	90° x 90°
Subsystems	LF: 1 x 12 in cone, 2.5 in voice coil, vented HF: 1 x 1 in exit, 1.8 in voice coil compression driver, coaxial-loaded
Amplifier Power	2x 500W
Weight (lb. / kg)	35 / 16
Dimensions (imperial / metric)	19x19x13 / 501x489x333



RSX12

Operating Range (-10 dB, Hz)	40 Hz to 300 Hz
Calculated Maximum Output Peak (dB SPL)	130 dB
Nominal Coverage (degrees)	Horizontal 360°, Vertical 360°
Subsystem	LF: 1 x 12 in cone, 3 in voice coil, vented
Amplifier Power	1000W
Weight (lb. / kg)	76.0 / 34.5
Dimensions (imperial / metric)	17x25x23 / 437x640x595



RSX218

Operating Range (-10 dB, Hz)	27 Hz to 125 Hz
Calculated Maximum Output Peak (dB SPL)	141 dB
Nominal Coverage (degrees)	Horizontal 360°, Vertical 360°
Subsystem	LF: 2 x 18 in cone, 3 in voice coil, vented
Amplifier Power	1400W
Weight (lb. / kg)	153 / 69.4
Dimensions (imperial / metric)	20.6x44x31 / 523x1118x791



RSX18

Operating Range (-10 dB, Hz)	30 Hz to 140 Hz
Calculated Maximum Output Peak (dB SPL)	132 dB
Nominal Coverage (degrees)	Horizontal 360°, Vertical 360°
Subsystem	LF: 1 x 18 in cone, 3 in voice coil, vented
Amplifier Power	1000W
Weight (lb. / kg)	93.6 / 42.5
Dimensions (imperial / metric)	20.25x36x31 / 514x919x790

**RADIUS™**



**Eastern Acoustic Works**

One Main Street | Whitinsville, MA 01588 | USA

tel 800 992 5013 / +1 508 234 6158

[www.eaw.com](http://www.eaw.com)

©2017 LOUD Technologies Inc. EAW is a registered trademark of LOUD Technologies Inc in the U.S.A. and all other countries.  
All other trademarks referenced herein are the property of their respective owners. All rights reserved. DESIGN PATENTS PENDING. Products are not drawn to scale.  
All terms, conditions, and specifications subject to change without notice.

RD0960 (B)