

APPLICATION

- For the largest cinema screen channel applications
- Bi-amplified

PRODUCT INFORMATION

The CSC923X represents a major advancement in cinema screen channel speaker design. Incorporating many new EAW engineering breakthroughs, the CSC923X is designed to provide optimal coverage in all cinemas, especially "stadium" seating auditoriums, where front-to-back coverage provides a difficult challenge for even the best conventional systems.

The bi-amplified three-way CSC923X features a multicomponent modular design which allows quick installation, with no assembly required on site.

The mid-range and high frequency horns feature an unusual asymmetrical flare design, which provides a narrow pattern at the rear of the room, and a wider pattern at the front of the room. This design minimizes energy radiated at the side walls, while concentrating sound in the seating area. The high frequency horn is coupled to a 2-in exit driver, and also features a controlled collapsing pattern at the very highest frequencies, which compensates for the screen's effect of widening the dispersion, thus resulting in a constant pattern in the seating area.

The single 10" mid-range cone driver is housed in its own subenclosure and is coupled to EAW's patented Radial Phase Plug™. The unique design of the Radial Phase Plug™ significantly reduces throat distortion and frequency "time smear", resulting in noticeably clearer, more natural sounding dialog.

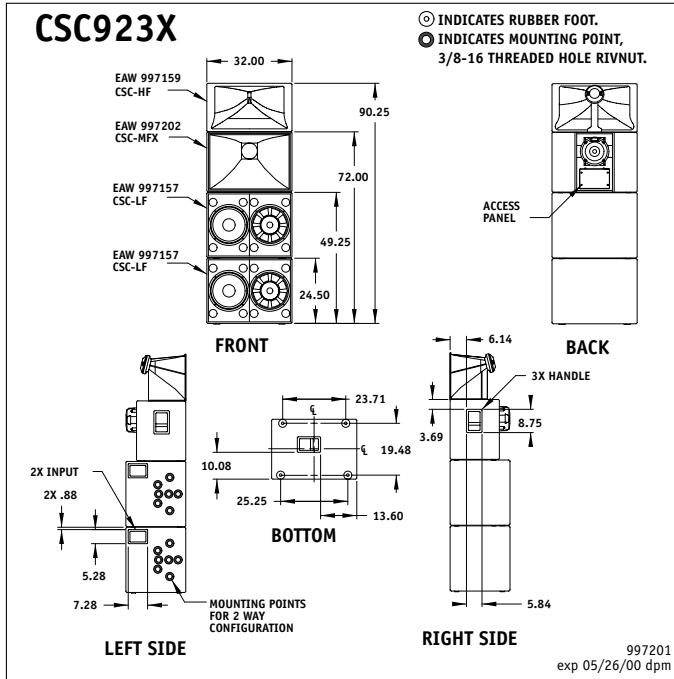
The dual low frequency sections incorporate EAW's "push-pull" driver arrangement. Each driver pair is out of phase relative to each other both physically and electrically, yet their product is acoustically in phase, substantially lowering mechanically induced distortion.

The CSC-MFX mid-frequency section includes an internal passive crossover network, which provides frequency division for the mid and high frequency sections.



DESCRIPTIVE DATA

Part Number	997201	
LF Subsystem	4x15-in vented, push pull configuration	
MF Subsystem	1x10-in horn-loaded cone, Radial Phase Plug™	
HF Subsystem	1x2-in exit/75 mm voice coil compression driver on 2 axis asymmetrical horn	
Configuration	3-way	
Powering Mode	Bi-amplified	
Enclosure Materials	Baltic birch plywood	
Finish	Wear-resistant textured black paint	
Connectors	2x2-terminal barrier strip	
Dimensions	inches	millimeters
	Height	90.5 in 2298.7
	Width	32.0 in 8128
Weights	Depth	22.5 in 5715
	pounds	kilograms
	Net	309.0 lb 140.16 kg
Shipping	329.0 lb 149.04 kg	



NOMINAL DATA continued

Calculated Maximum Output (dB SPL)

LF Peak	142
MF/HF Peak	139.4
LF Long Term	136
MF/HF Long Term	133.4

Recommended High-Pass Frequency

24 dB/Octave	50Hz
--------------	------

COMPONENTS & CONSTRUCTION

All external components feature a textured, non-reflective black finish to eliminate the reflection of light through perforated cinema screens.

NOMINAL DATA

Frequency Response

±3 dB	35 Hz to 18 kHz
-------	-----------------

Sensitivity (dB SPL, 1 Watt @ 1m)

LF	103
MF/HF	108

Impedance (Ohms)

LF	2x4
MF/HF	8

Power Handling, (AES Standard, Watts)

LF	2000
MF/HF	350