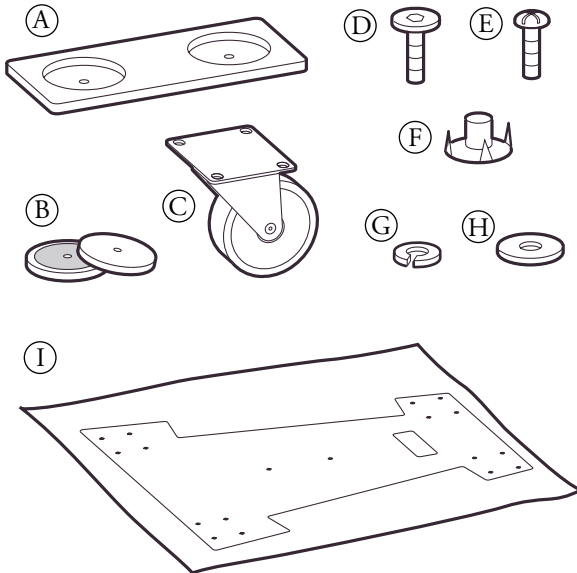




Instructions/Kit/Pallet [KF850z]

The KF850 Pallet Kit is for constructing four KF850 Castered Pallets using the supplied hardware along with user supplied wood platforms.

Warning: Installation should only be done by an experienced technician. Improper installation may result in damage to the equipment, injury or death.



KF850z CASTER PALLET KIT PARTS LIST,

EAW P/N 0008835: (Qty in parenthesis is per pallet)

Item	EAW P/N	Qty	Description
A	0008712	4 (1)	Block, Magnet
B	101047	8 (2)	Magnet/Caster Pallet
C	150001	16 (4)	Caster/Blue Swivel
D	104023	8 (2)	Bolt 1/4-20 x 1 Lg Joint Connector
E	102039	64 (16)	Screw 1/4-20 x 3/4 Lg PH PHMS
F	113016	72 (18)	T-Nut 1/4-20 x 7/16 Lg
G	105008	72 (18)	Washer/Lock 1/4 Blk
H	105007	64 (16)	Washer/Flat 1/4 Blk
I	0008872	4 (1)	Template, Kit, Pallet, KF850z
J	0008871	4 (1)	Instructions (this sheet)

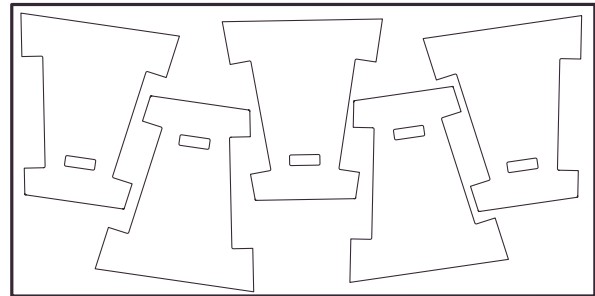
TOOLS AND MATERIALS REQUIRED (per Kit):

- Ø5/16 in Drill
- Wood Saw
- 5/32 Allen wrench
- Wood Glue
- Hammer
- Plywood .62 in /15 mm thick

PREPARATION

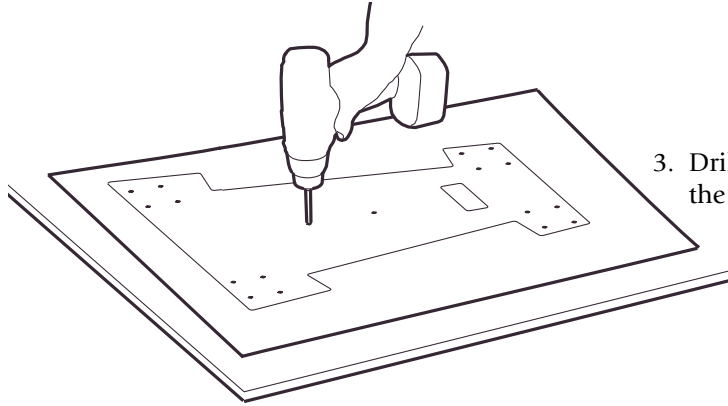
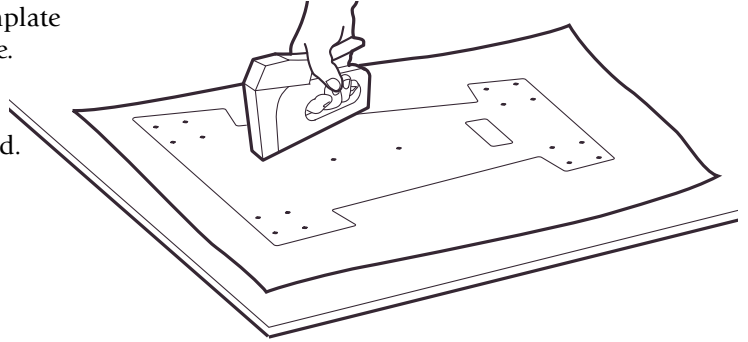
The strength, craftsmanship, and finish for the wood platform is the user's responsibility. These guidelines are recommended:

1. As shown to the right, up to five pallet platforms can be cut from a standard 4 x 8 ft plywood sheet.
2. The platform shape is optional. The cut-outs along the two sides function to provide clearance for the wheels, when the pallets are stacked "wood-to-wood" at 90 degrees to each other. If stacking is not desired, the platform may be cut to the basic trapezoidal shape.
3. The rectangular hole in narrower end is an optional, but useful, handhold for carrying the finished pallet.
4. To reduce the possibility of injury, break all edges and corners of the platform, top and bottom. Approximately a 1/4 in /5 mm radius break is recommended.
5. For protection against moisture damage or other deterioration, finish the platform with a high quality primer and paint or stain. Do this prior to installing the supplied hardware.

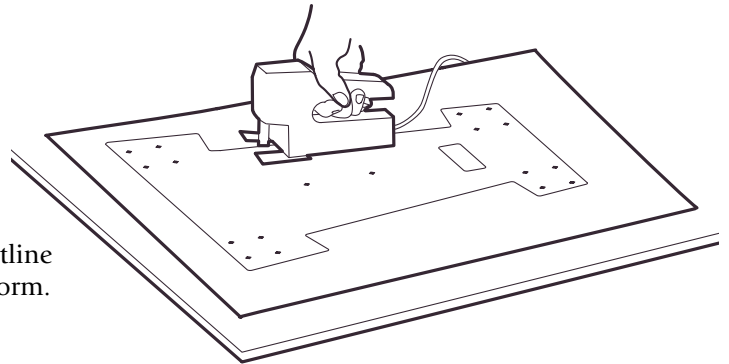


ASSEMBLY

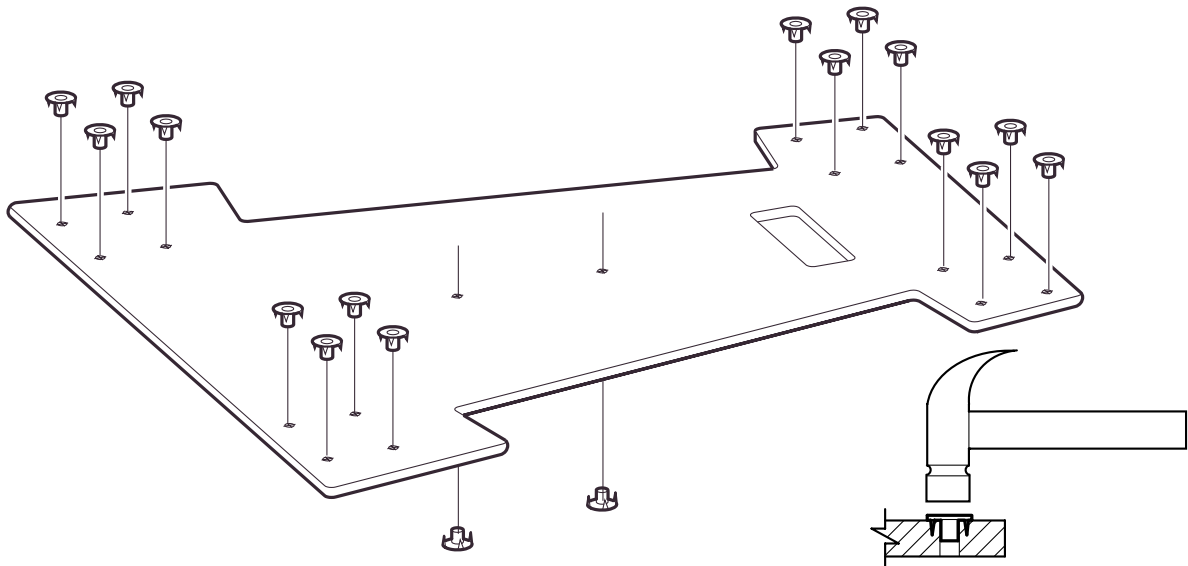
1. Measure the dimensions shown on the Template to ensure the Template is at the correct scale.
2. Fasten the supplied template to the plywood.



3. Drill the eighteen $\text{Ø } 5/16$ in holes required at the locations provided on the Template.

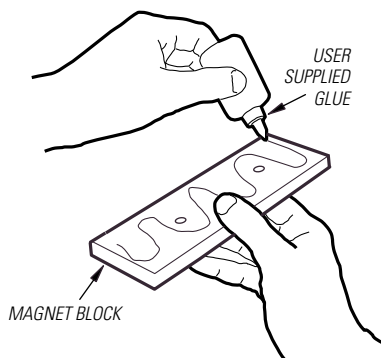


4. Using the Template outline cut out the pallet platform.

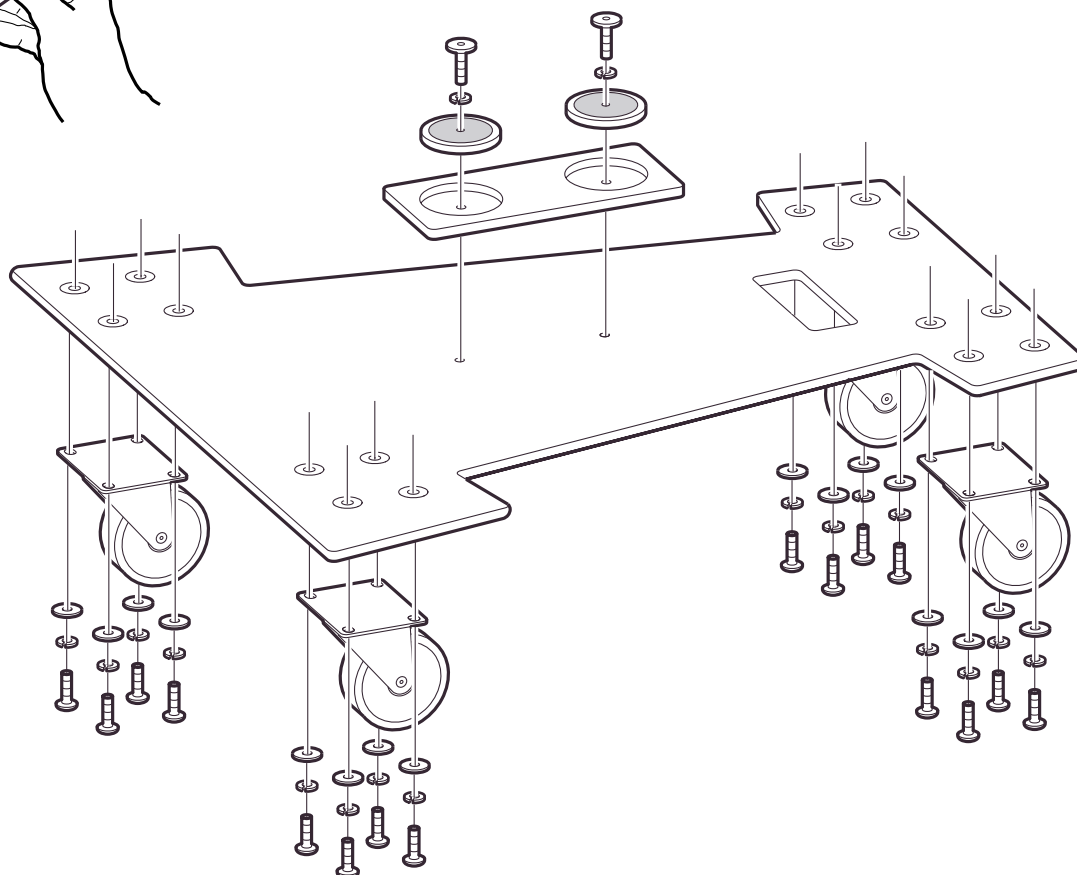


5. Install the "T-nuts" in the eighteen holes, using a hammer to seat them firmly into the wood.

Notes: The two T-nuts for the magnet assembly in the center of the platform are installed on the opposite side as those for the casters. If possible, seat the T-nuts flush with the wood surface.



6. Apply wood glue to the flat side of the Magnet Block.



7. Place the Magnet Block, flat side against the wood, aligning its holes with those previously drilled in the platform. Place the two magnets, metal side facing down and magnet material facing up, into the recesses in the Magnet Block.
8. Attach the Magnets and Magnet Block with two "E" screws and two lock washers.
9. Attach the four casters using four "D" screws, lock washers, and flat washers for each.
10. Firmly tighten all eighteen screws.

If you have any questions about making the KF850z Caster Pallet, please contact the EAW Application Support Group for assistance:

EAW ASG
One Main Street
Whitinsville, MA 01588 USA

Tel 800-992-5013 (USA only)
Tel 508-234-6158
Fax 508-234-3776
E-mail asg@eaw.com

**Thank you for purchasing
EAW products**

The Laws of Physics | The Art of Listening

