



SPECIFICATIONS CP499

FEATURES

- High performance passive ceiling-mount system
- Woofers couple to act like a single 12-in woofer
- 1.4-in exit HF on large format 90° (conical) horn

DESCRIPTION

The CP499 is a low cost, high-performance ceiling loudspeaker. Its unique design utilizes four 6-in low/mid frequency cone drivers arrayed around a medium format 90° x 90° degree HF horn. The HF horn is mated to a 1.4-in exit compression driver. This configuration centers the low and high frequency axes to provide the same type of point source performance as a traditional coaxial design. This also allows the use of a much larger HF horn and provides significantly improved HF pattern control to much lower frequencies than typical co-axial ceiling loudspeakers. The four low/mid drivers are arrayed to extend useful pattern control to below 400 Hz. Additionally, their smaller cone size provides far better reproduction of critical midrange frequencies without sacrificing output capabilities.

APPLICATION

The CP499 is designed for use in a variety of ceiling mounted applications where pattern control, high-quality reproduction and higher outputs are required. These include convention and conference centers, ballrooms, arena fill, and large meeting rooms. The CP499 carries a six year warranty.

PERFORMANCE

Frequency Response (1 W @ 1m)	±3 dB 62 Hz to 20 kHz	
	-10 dB 45 Hz	
Axial Sensitivity (dB SPL, 1 W @ 1m)	94	
Impedance (Ohms)	8	
Power Handling, (Watts, continuous)	500	
Calculated Maximum Output (dB SPL @ 1 m)	Peak	127
	Long Term	121
Nominal Coverage Angle, -6 dB Points (degrees)	Horizontal	90
	Vertical	90
Recommended High-Pass Frequency	24 dB/Octave	50 Hz



PHYSICAL

System Configuration	Two-way, full-range	
LF Subsystem & Loading	4x 6.5-in woofers, vented	
HF Subsystem & Loading	1.4-in exit/1.75-in voice coil compression driver on constant directivity horn	
Powering	Full-range passive	
Enclosure Material	Exterior grade Baltic birch plywood	
Finish	Wear-resistant textured black paint	
Connectors	2 terminal barrier strip	
Suspension Hardware	8x 3/8"-16 threaded mounting/suspension points (2 on alternate sides; 4 on back)	
Grille	Powder coated perforated steel	

Dimensions		inches	millimeters
		Height	23.4
	Width	23.4	594
	Depth	12.8	325

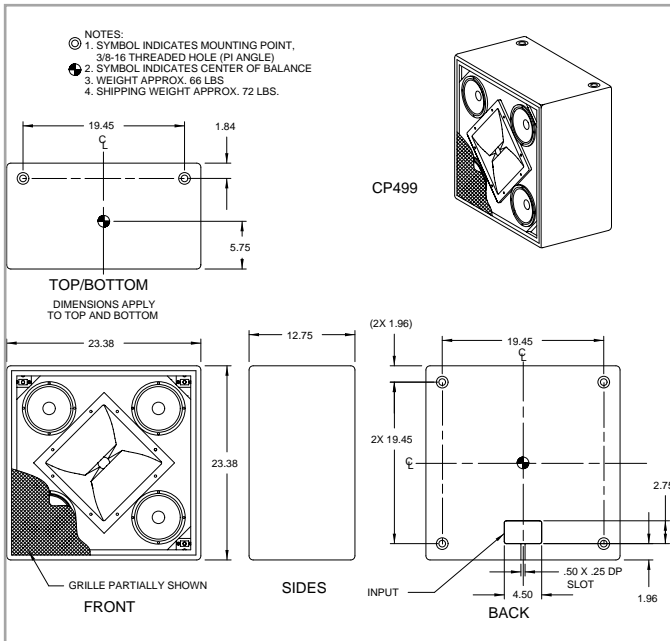
Weights		pounds	kilograms
		Net Weight	70
	Shipping Weight	76	34.6





SPECIFICATIONS CP499

DIMENSIONAL DRAWING



Manufacturing tolerances are +/- 0.13 and +/- 1°

A & E SPECIFICATIONS

The 2-way full-range ceiling mounted coaxial loudspeaker system shall incorporate four 6.5-in concentrically arrayed LF/MF transducers and a 1.4-in exit HF compression driver.

The LF/MF transducers shall be mounted in a vented enclosure tuned for optimum low frequency response. The HF driver shall be loaded on a constant directivity horn with a nominal coverage pattern of 90° x 90°).

System frequency response shall be ± 3 dB from 62 Hz to 20 kHz measured on axis. The loudspeaker shall produce a sound pressure level (SPL) of 94 dB SPL on axis at 1 meter with an input of 1 Watt, and shall be capable of producing a peak output of 127 dB SPL on axis at 1 meter. The loudspeaker shall handle 500 watts of amplifier power and shall have a nominal impedance of 8 ohms.

The loudspeaker enclosure shall be rectangular in shape and shall be designed to mount in a 24-in ceiling grid. It shall be constructed of exterior grade Baltic birch plywood. It shall be finished in wear-resistant textured black paint. Input connectors shall be via a terminal strip. A total of eight 3/8"-16 threaded mounting points (2 on alternate sides, 4 on back) shall be provided. The front of the loudspeaker shall be covered with a powder coated perforated steel grille.

The 2-way full-range ceiling mounted coaxial loudspeaker shall be the EAW model CP499.

