



TECHNICAL SPECIFICATIONS MK5294

DESCRIPTION

EAW's MK5294 two-way loudspeaker system provides high output, low distortion sound reinforcement for a wide range of permanently installed audio applications.

The 15-in low frequency cone and 1.4-in exit/75mm voice coil high frequency compression driver provide high output and low distortion plus enhanced power handling capabilities.

EAW's advanced beamwidth matching crossover selects a crossover point where the HF horn's beamwidth matches that of the woofer. The result is more even off-axis frequency response (power response) for more complete coverage.

The MK5294 is a biamplified loudspeaker requiring the use of pre-configured MX Series processor settings.

APPLICATION

The MK5294 was designed to support the widest possible range of permanent installations and was optimized for use in distributed systems.

Its high output capabilities let it cover a large seating area in such applications as houses of worship, themed entertainment venues, arenas, stadiums and nightclubs.

The comprehensive system of integral 3/8"-16 threaded mounting points permit safe, load-rated suspension.

DESCRIPTIVE DATA

Configuration	2-way, Full Range	
Powering	Biamplified	
LF Subsystem	1x 15-in, Vented	
HF Subsystem	1x 1.4-in Exit/75mm Voice Coil Compression Driver on Constant Directivity Horn	
Coverage Angles (h° x v°)	90 x 45	
Cabinet Type (shape)	Trapezoidal	
Enclosure Materials	Baltic Birch Plywood	
Finish	Wear-resistant Textured Black Paint	
Connectors	2x 2-Terminal Barrier Strip	
Suspension Hardware	(13) 3/8"-16 Threaded Mounting Points (3 each on top and bottom, 2 per side, 3 on rear)	
Grill	Powder Coated Perforated Steel	
Dimensions	Inches	Millimeters
Height	30.00	762
Width (front)	18.71	475
Width (back)	8.88	226
Depth	19.73	501
Trapezoid Angle	15 Degrees per Side	
Weights	Pounds	Kilograms
Net Weight	80	36.3
Shipping Weight	92	41.7





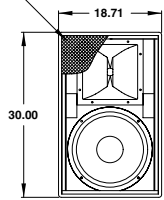
TECHNICAL SPECIFICATIONS MK5294

DIMENSIONAL DRAWING

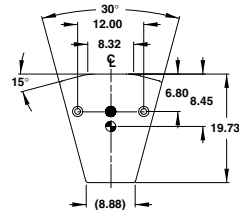
MK5294

- ⊙ INDICATES MOUNTING POINT, 3/8"-16 THREADED HOLE (PI ANGLE).
- ⊕ INDICATES CENTER OF BALANCE.
- INDICATES MOUNTING POINT, 3/8"-16 THREADED HOLE (NUT PLATE)

GRILLE PARTIALLY SHOWN

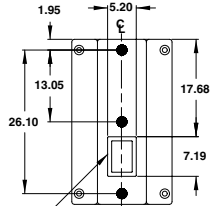


FRONT

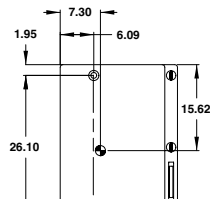


BOTTOM
DIMENSIONS APPLY TO TOP & BOTTOM

510609 (A)
exp 4/6/00 dpm



BACK



SIDES

DIMENSIONS APPLY TO BOTH SIDES

NOMINAL DATA

Frequency Response (1 Watt @ 1m, electronic processing)

±3 dB	56 Hz to 19 KHz
-10 dB	46 Hz

Axial Sensitivity (dB SPL, 1 Watt @ 1m)

LF	99
HF	109

Impedance (Ohms)

LF	8
HF	16

Power Handling, AES Standard (Watts)

LF	800
HF	200

Calculated Maximum Output (dB SPL)

LF Peak	134.0
HF Peak	138.0
LF Long Term	128.0
HF Long Term	132.0

ARCHITECTURAL SPECIFICATIONS

The two-way full range loudspeaker systems shall incorporate 15-in LF transducer and a 1.4-in exit/75mm voice coil compression driver HF transducer.

The LF driver shall be mounted in a vented enclosure tuned for optimum low frequency response. The HF driver shall be loaded on constant directivity horn with a nominal coverage pattern of 90° (h) x 45° (v).

System frequency response shall vary no more than ±3 dB from 70 Hz to 19 kHz measured on axis. The low frequency section shall produce a Sound Pressure Level (SPL) of 99 dB SPL on axis at 1 meter with a power input of 1 Watt, and shall be capable of producing a peak output of 134 dB SPL on axis at 1 meter. The high frequency section shall produce a Sound Pressure Level (SPL) of 109 dB SPL on axis at 1 meter with a power input of 1 Watt, and shall be capable of producing a peak output of 138 dB SPL on axis at 1 meter. The low frequency section shall handle 800 Watts of amplifier power (AES Standard) and shall have a nominal impedance of 8 Ohms. The high frequency section shall handle 200 Watts of amplifier power (AES Standard) and shall have a nominal impedance of 16 Ohms.

The loudspeaker enclosure shall be trapezoidal in shape. It shall be constructed of 15mm thickness void-free cross-grain-laminated Baltic Birch plywood and shall employ extensive internal bracing. It shall be finished in wear-resistant textured black paint. Input connector shall be 2x 2-terminal barrier strip. The following suspension hardware shall be provided: A total of thirteen 3/8"-16 threaded mounting points (three each on top and bottom, two per side, three on rear) shall be provided. The front of the loudspeaker shall be covered with a powder coated perforated steel grill.

The two-way full range loudspeaker shall be the EAW model MK5294.