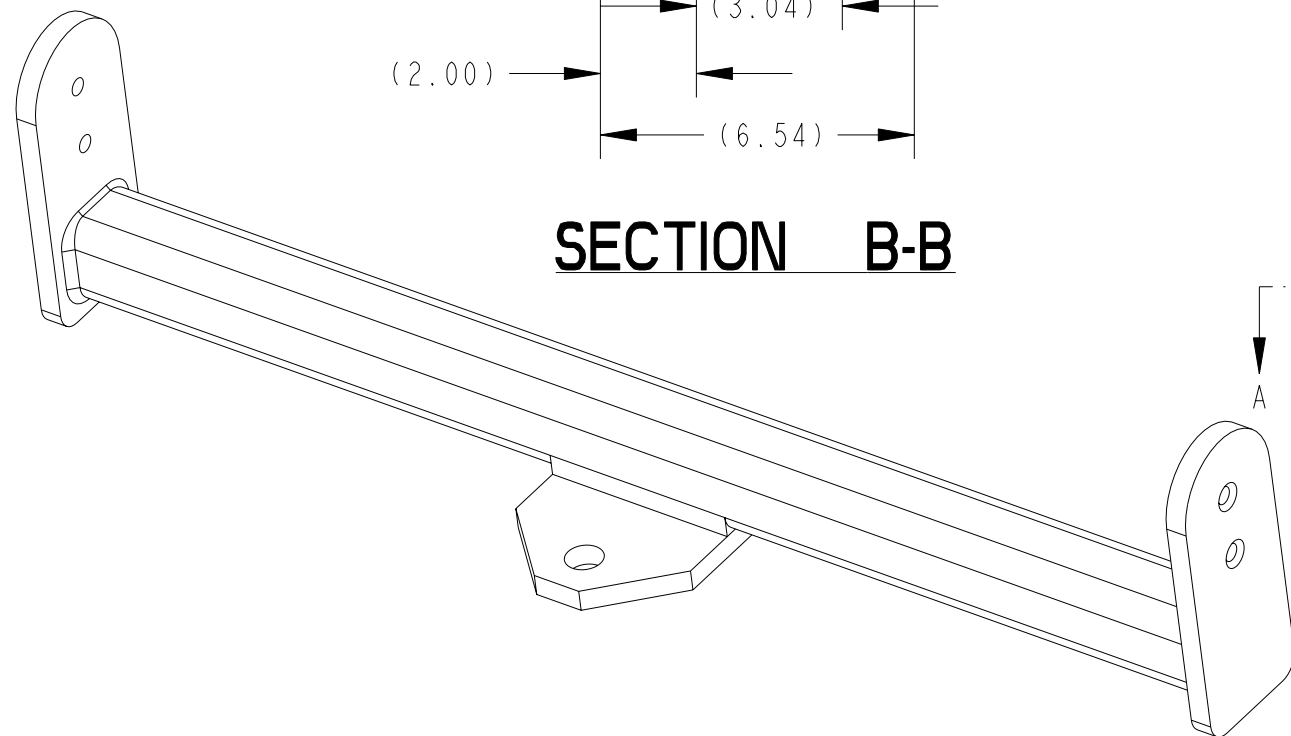
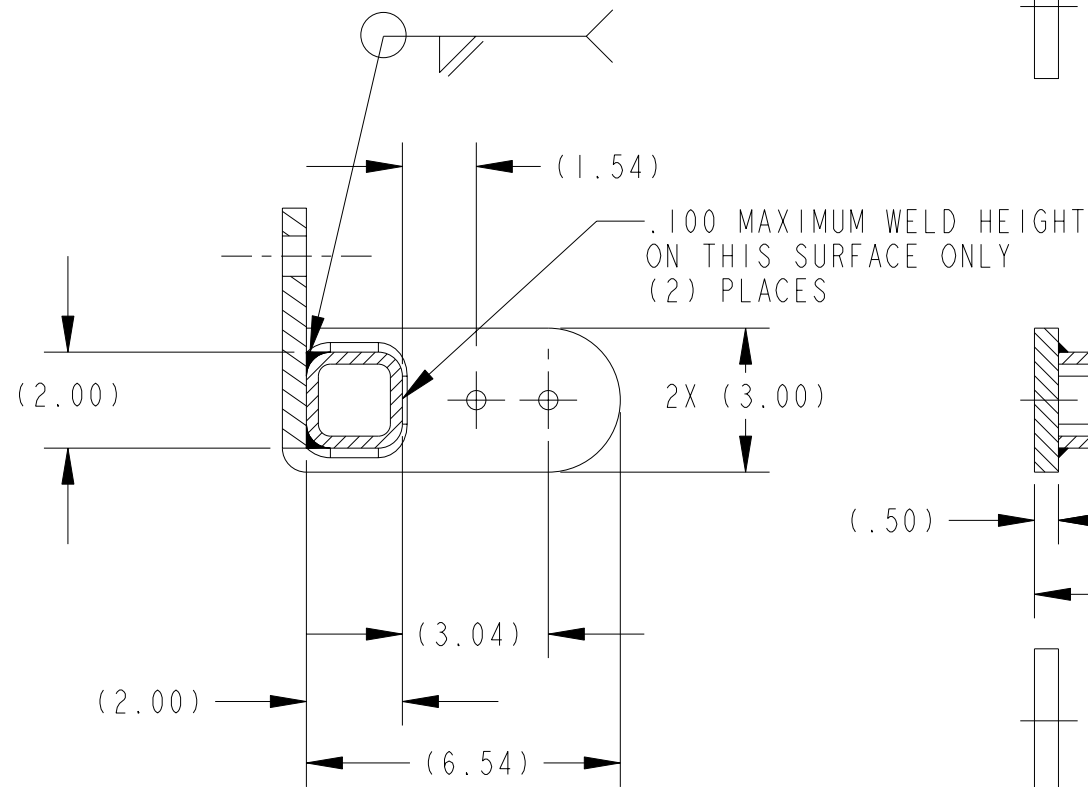
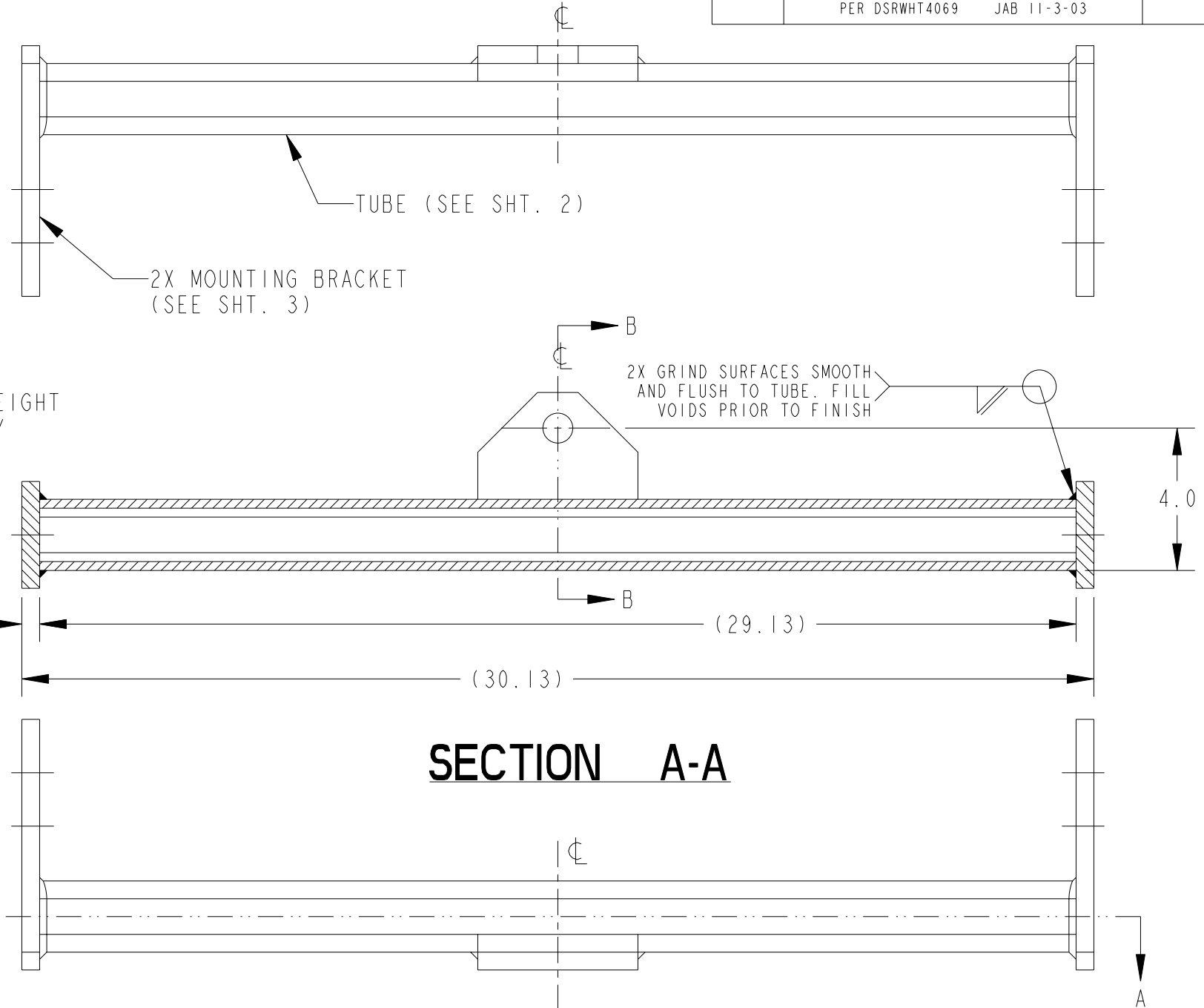


NOTES:

1. MATERIAL: SEE PART DETAILS ON SHEETS 2 & 3
2. REMOVE BURRS, SHARP EDGES AND WELD SPLATTER
3. PART TO BE CLEAN OF GREASE AND DEBRIS.
4. COATING: DUPONT EFB-504-SO RAVEN BLACK POWDERCOAT, SHERWIN WILLIAMS POWDURA EPOXY POWDER OR MORTON 10-7068 VISTA BLACK
5. BLACK OXIDE COATING PRIOR TO POWDERCOAT
6. ALL DIMENSIONS PRIOR TO OXIDIZING AND POWDERCOATING
7. REFER TO EAW MATERIAL SPECIFICATION 480455 FOR LABELING AND SHIPPING REQUIREMENTS.

REV	DESCRIPTION	APVD/DATE
A	RELEASE TO PRODUCTION FROM REV 2 WITH THE FOLLOWING CHANGES 4.0 WAS 4.00, TOLERANCE IN TITLE BLOCK WAS .X±.03-.XX±.015-.XXX±.005 ON SHT 1, .5 RAD REF WAS .26 REF ON TUBE ON SHT 2, .78 WAS .64 & ADDED .12 DP. ON MOUNTING PLATE ON SHT 3, ADDED NOTE 2 ON SHT 2 & 3, ADDED NOTE 5 ON SHT 1, ADDED WELD NOTE IN SECTION B-B PER DSRWHT4069 JAB 11-3-03	KFH 1-28-04 TSD 1-28-04



DOCUMENT CONTROL PER SPECIFICATION 4.5.201

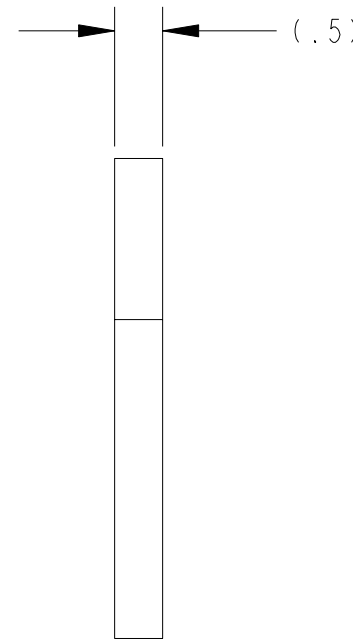
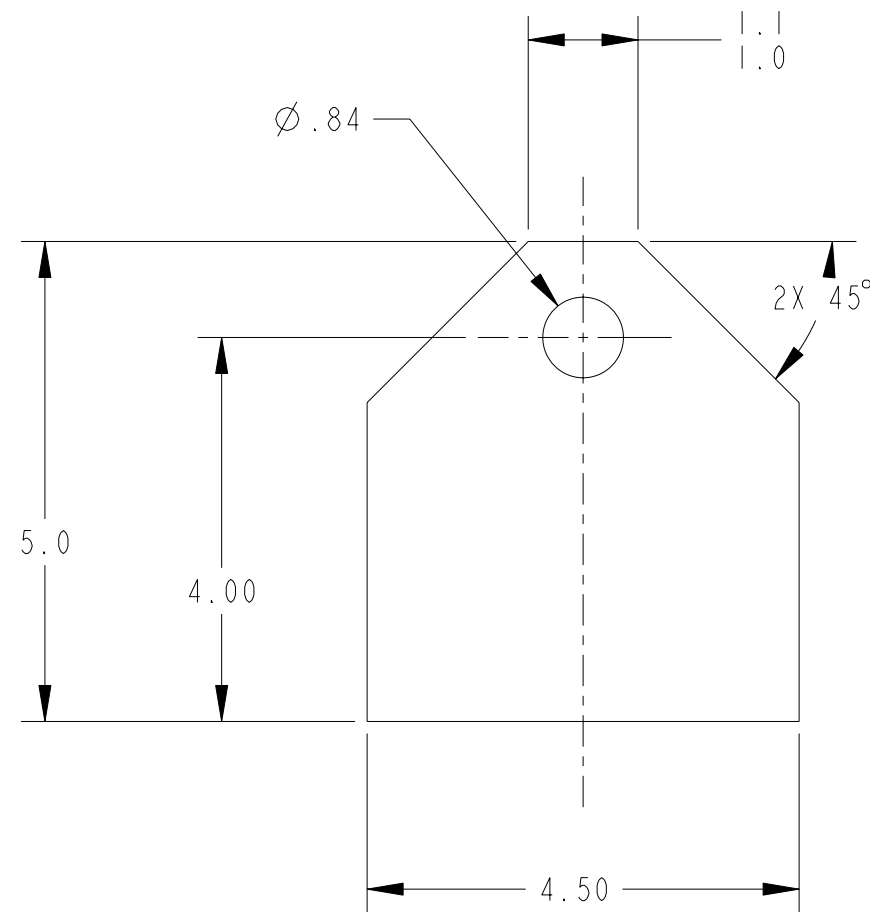
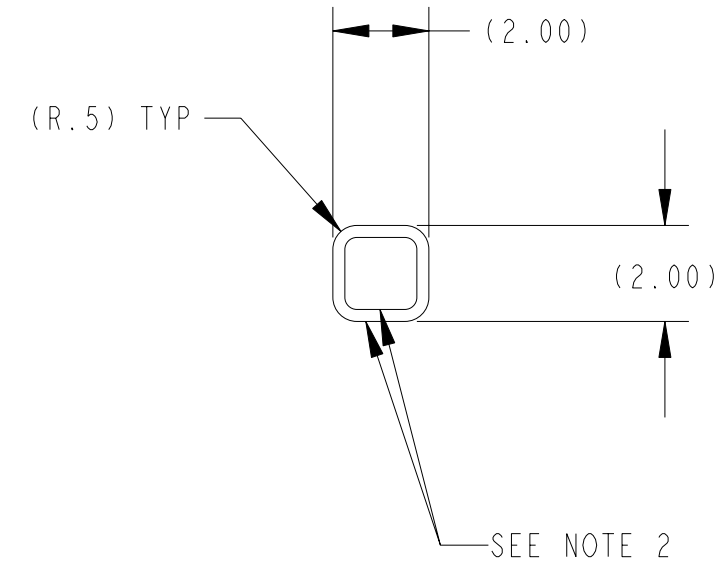
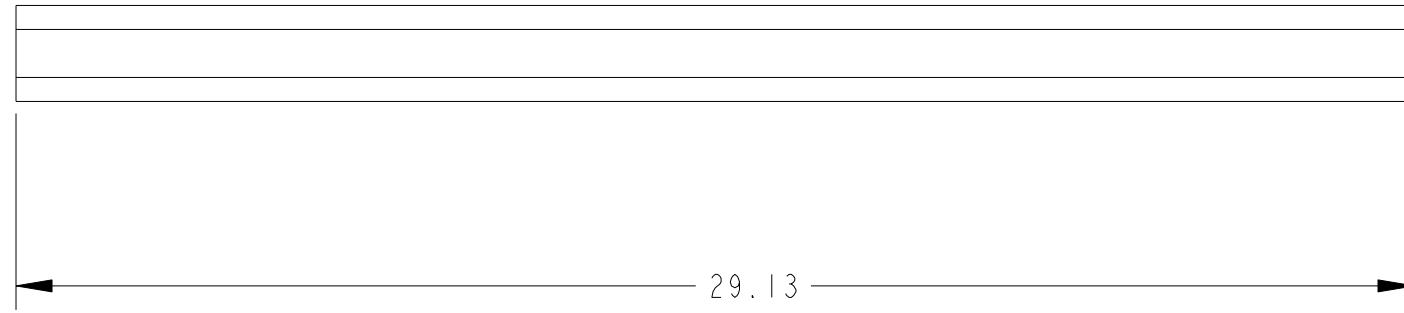
<p>THIRD ANGLE PROJECTION</p>	<p>UNLESS OTHERWISE SPECIFIED: ALL DIMENSIONS ARE IN INCHES</p> <p>TOLERANCE IN INCHES X ± 1 XX ± .03 XXX ± .01 FRACTIONS ± 1/32 ANGLES ± 1/2°</p> <p>(XXX) : REF DIMS NO TOLERANCE IMPLIED</p> <p>T.S.C. : THEORETICAL SHARP CORNER</p> <p>DIMENSIONS ACROSS CENTERLINES TO BE SYMMETRICAL</p>	<p>STATUS: <b>PRODUCTION</b></p>		<p><b>EAW</b> EASTERN ACOUSTIC WORKS ONE MAIN STREET WHITINSVILLE, MA 01588 USA</p>	
		<p>APPROVALS</p>		<p>DATE</p>	
<p>THIS DRAWING IS THE PROPERTY OF EAW AND SHALL NOT BE COPIED, REPRODUCED OR USED AS THE BASIS FOR MANUFACTURE OR SALE OF APPARATUS WITHOUT WRITTEN AUTHORIZATION. DO NOT SCALE DRAWING.</p>		<p>DRAWN: J BRADLEY</p>		<p>9/3/03</p>	
		<p>CHECKED: KFH</p>		<p>3/8/04</p>	
		<p>DES. ENG. TSD</p>		<p>3/5/04</p>	
		<p>MFG. ENG. M.D.</p>		<p>3/15/04</p>	
		<p>DRAWING NUMBER: <b>0008334</b></p>		<p>REVISION: <b>A</b></p>	

PRO ENGINEER

# TUBE

NOTES:

1. MATERIAL: ASTM A500 GRADE B 2X2X1/4 STRUCTURAL TUBING
2. FINISH: BLACK OXIDE COATING
3. REMOVE BURRS AND SHARP EDGES

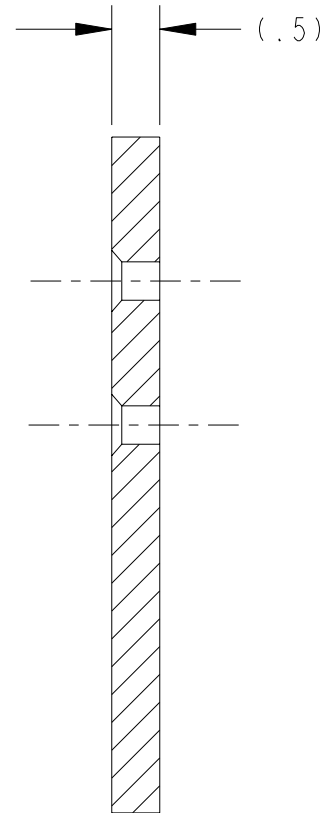
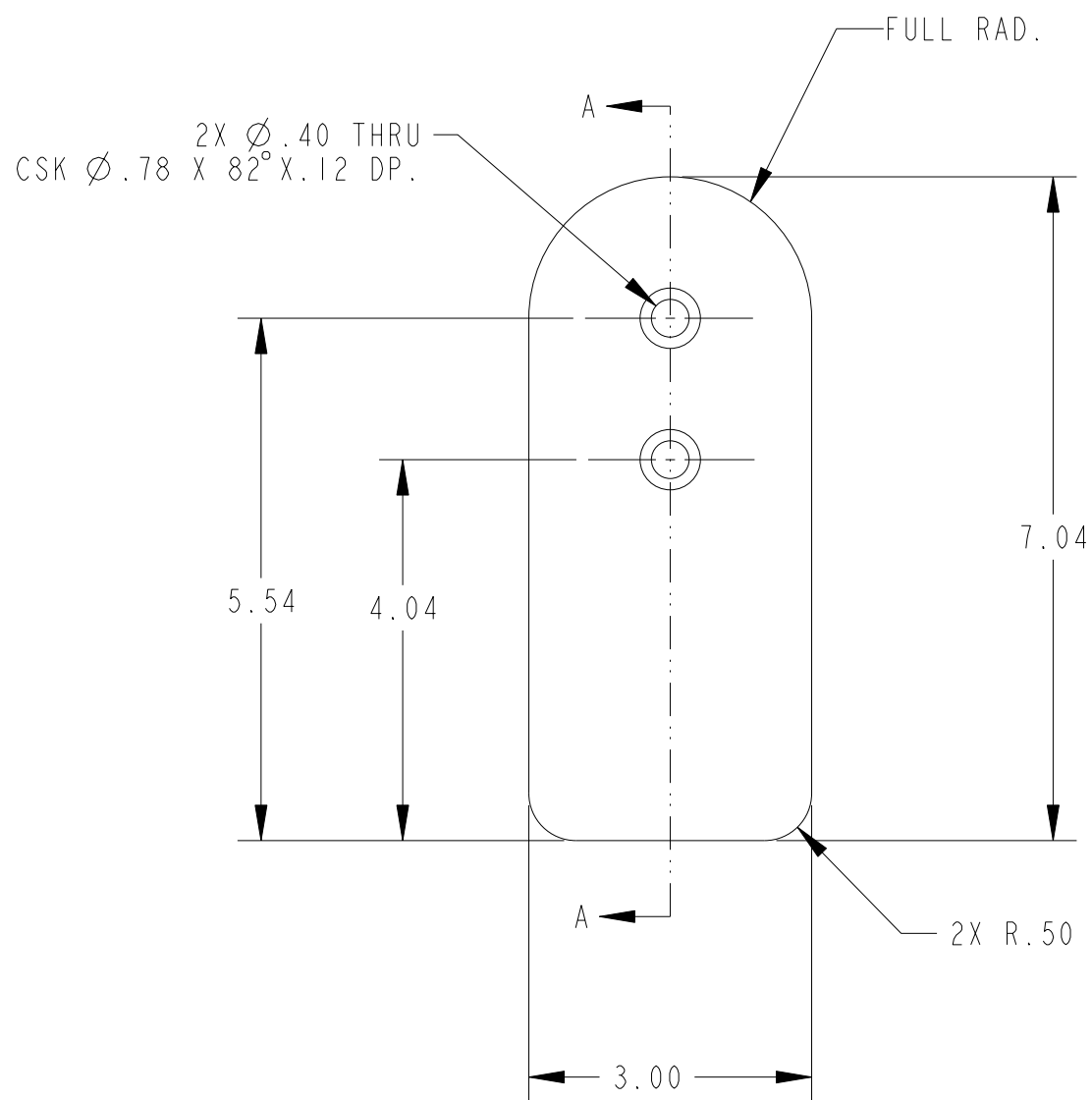


# SUPPORT

NOTES:

1. MATERIAL: .5" THK ASTM A36 STEEL
2. FINISH: BLACK OXIDE COATING
3. REMOVE BURRS AND SHARP EDGES

<b>EAW</b> EASTERN ACOUSTIC WORKS ONE MAIN STREET WHITINSVILLE, MA 01588 USA			
TITLE: <b>BAR / PULL / RIGGING (KF730P)</b>			
<b>B</b>	SHEET 2 OF 3	SCALE: NA	
DRAWING NUMBER: <b>0008334</b>			REVISION: <b>A</b>



SECTION A-A

# MOUNTING PLATE

- NOTES:
1. MATERIAL: .5" THK ASTM A36 STEEL
  2. FINISH: BLACK OXIDE COATING
  3. REMOVE ALL BURRS AND SHARP EDGES.
  4. 2 PIECES RQUIRED PER WELDMENT.

EASTERN ACOUSTIC WORKS ONE MAIN STREET WHITINSVILLE, MA 01588 USA			
TITLE: <b>BAR / PULL / RIGGING</b> (KF730P)			
<b>B</b>	SHEET	3 OF 3	SCALE: NA
DRAWING NUMBER:			REVISION:
0008334			A